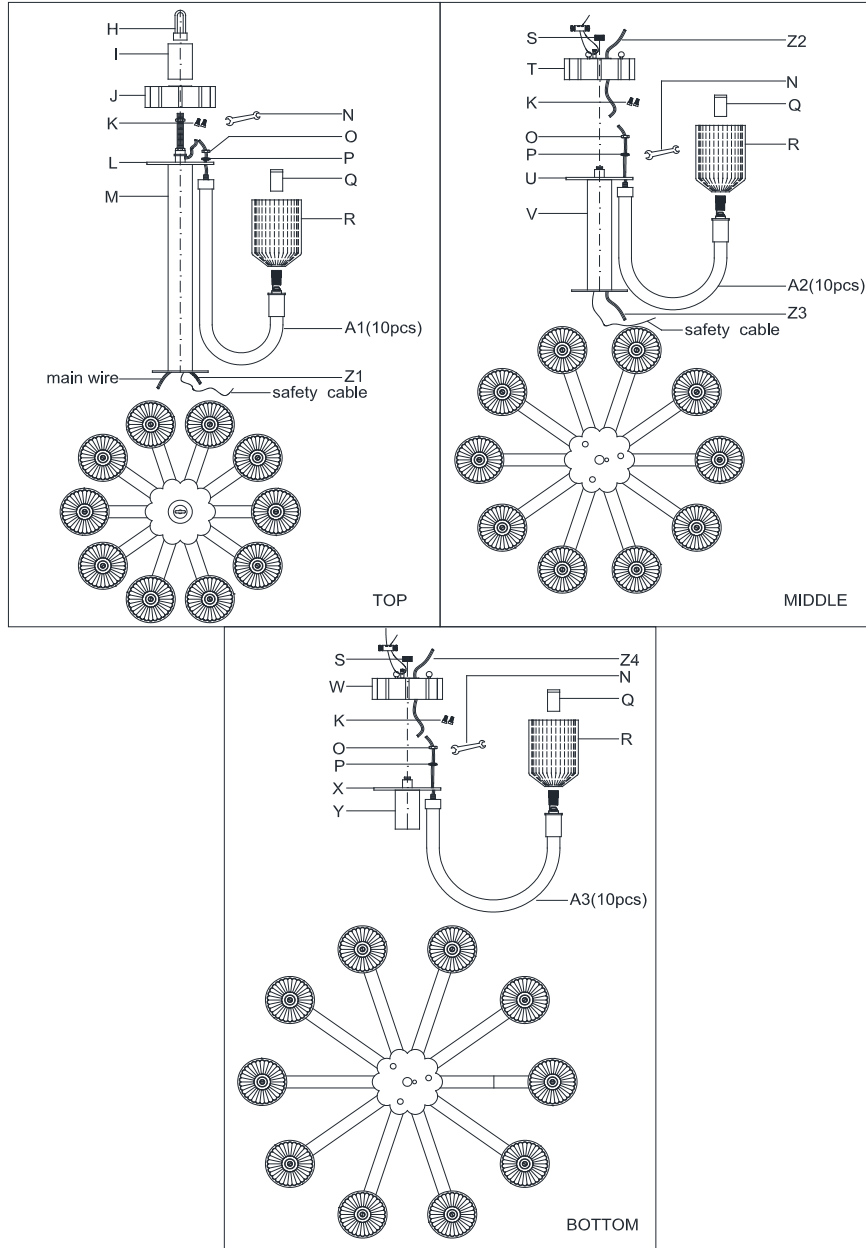


ASSEMBLY INSTRUCTIONS



Reverie Large Three-Tier Chandelier

Item # KW 5406

WE RECOMMEND INSTALLATION OF THIS LIGHTING FIXTURE BE DONE BY A LICENSED ELECTRICIAN.

WARNING*SWITCH OFF THE MAIN ELECTRICAL SUPPLY FROM THE MAIN FUSE BOX/CIRCUIT BREAKER BEFORE INSTALLATION. INSPECT ITEM CAREFULLY BEFORE ATTEMPTING TO INSTALL. IF THERE IS ANY DAMAGE OR OBVIOUS DEFECT. DO NOT INSTALL.**

ITEM MAY NOT BE RETURNED ONCE IT HAS BEEN INSTALLED.

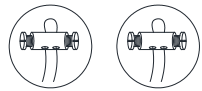
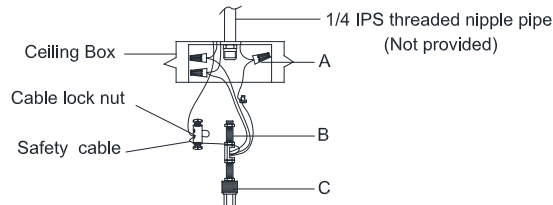
NOTE: CAREFULLY UNPACK EACH PIECE IN TOP LAYER OF PACKING PRIOR TO REMOVING. RETAIN ALL PACKING MATERIAL UNTIL INSPECTION AND INSTALLATION ARE FINAL.

- Carefully remove all parts from the box.
- Loosen the top ring (H), remove the tube (I) and gap (J).
- Attach wired arm (A1) to the plate (L) and secure with spring washer (P) and lock nut (O) by using wrench (N). Check that the arms are spaced evenly before final tightening.
- Connect the hot wire (smooth edge, markings) from the arms to the jumper hot wire (Z1) (black) using wire nut (K).
- Connect the neutral wire (ribbed, no markings) from the arms to the jumper neutral wire (Z1) (white) using wire nut (K).
- Wrap all connections individually with electrical tape.
- Let the jump wire (Z1) pass through the hole on the plate (L), then pass through the tube (M).
- Attach the gap (J) to the plate (L) and secure with tube (I) and top ring (H).
- Loosen the knurled ring (S), remove the gap (T).
- Attach wired arm (A2) to the plate (U) and secure with spring washer (P) and lock nut (O) by using wrench (N). Check that the arms are spaced evenly before final tightening.
- Connect the hot wire (smooth edge, markings) from the arms to the two jumper hot wires (Z2 & Z3) (black) using wire nut (K).
- Connect the neutral wire (ribbed, no markings) from the arms to the two jumper neutral wires (Z2 & Z3) (white) using wire nut (K).
- Wrap all connections individually with electrical tape.
- Let the jump wire (Z2) pass through the hole on the gap (T), then let the jump wire (Z3) pass through the hole on the plate (U), then pass through the tube (V).
- Attach the gap (T) to the plate (U) and secure with knurled ring (S).

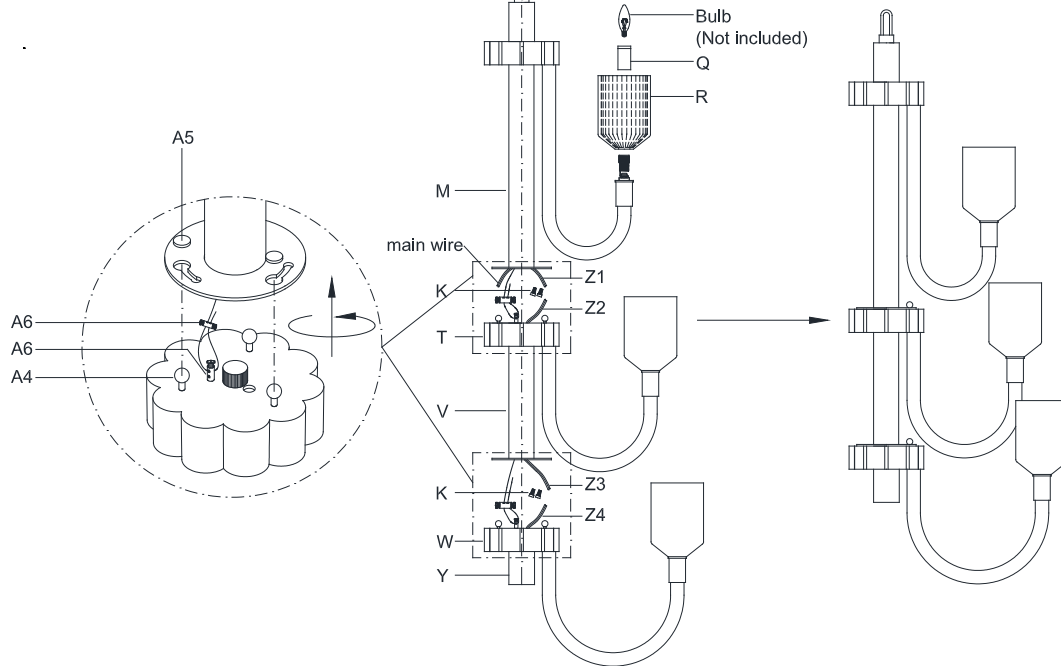


VISUAL COMFORT & Co. Est. 1987

ASSEMBLY INSTRUCTIONS



- TO assemble safety cables:
1. Join fixture safety cables with safety cable from ceiling.
 2. Wrap both safety cable around the cable lock nut.
 3. Insert screws into both holes on cable lock nut, secure screws with screwdriver.
 4. Push the cable lock nut into outlet box.



Reverie Large Three-Tier Chandelier

Item # KW 5406

WE RECOMMEND INSTALLATION OF THIS LIGHTING FIXTURE BE DONE BY A LICENSED ELECTRICIAN.

WARNING*SWITCH OFF THE MAIN ELECTRICAL SUPPLY FROM THE MAIN FUSE BOX/CIRCUIT BREAKER BEFORE INSTALLATION. INSPECT ITEM CAREFULLY BEFORE ATTEMPTING TO INSTALL. IF THERE IS ANY DAMAGE OR OBVIOUS DEFECT. DO NOT INSTALL.**

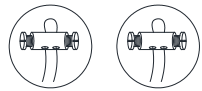
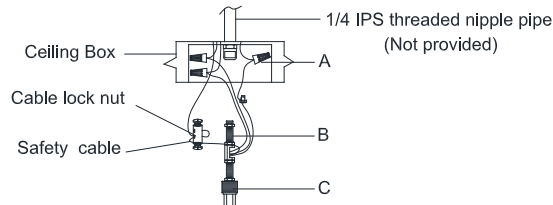
ITEM MAY NOT BE RETURNED ONCE IT HAS BEEN INSTALLED.

NOTE: CAREFULLY UNPACK EACH PIECE IN TOP LAYER OF PACKING PRIOR TO REMOVING. RETAIN ALL PACKING MATERIAL UNTIL INSPECTION AND INSTALLATION ARE FINAL.

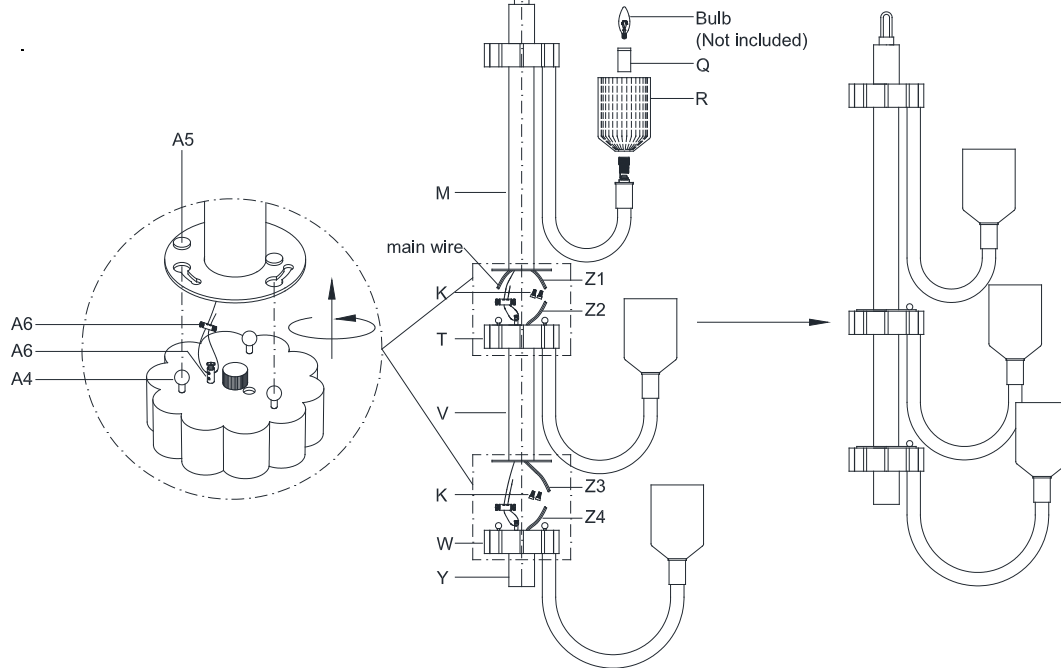
16. Loosen the knurled ring (S), remove the gap (W).
17. Attach wired arm (A3) to the plate (X) and secure with spring washer (P) and lock nut (O) by using wrench (N). Check that the arms are spaced evenly before final tightening.
18. Connect the hot wire (smooth edge, markings) from the arms to the jumper hot wire (Z4) (black) using wire nut (K).
19. Connect the neutral wire (ribbed, no markings) from the arms to the jumper neutral wire (Z4) (white) using wire nut (K).
20. Wrap all connections individually with electrical tape.
21. Let the jump wire (Z4) pass through the hole on the gap (W).
22. Attach the gap (W) to the plate (X) and secure with knurled ring (S).
23. A 1/4" threaded nipple must be installed in your outlet box. Then install the threaded nipple (B) into the outlet box.
24. Attach the canopy (D) to the ceiling loop (C) and secure with lock collar (E).
25. Unscrew the threaded collar on the chain end link (G) and attach it to the top ring (H). Close the threaded collar to secure the fixture body.
26. With the fixture dimension as a guide, shorten the chain (F) as needed using a pair of chain pliers.
27. Unscrew the threaded collar on the other chain end link, raise the fixture then attach chain end link to the ceiling loop (C). Close the threaded collar to secure.
28. Let the main wire pass through the tube (M).
29. Unwrap the wiring from the top of the fixture body. Weave the power supply cord and the ground wire through the chain (F).
30. When you reach the canopy and ceiling loop, measure the wires then cut. Be certain to leave enough to connect inside of the outlet box.



ASSEMBLY INSTRUCTIONS



TO assemble safety cables:
 1. Join fixture safety cables with safety cable from ceiling.
 2. Wrap both safety cable around the cable lock nut.
 3. Insert screws into both holes on cable lock nut, secure screws with screwdriver.
 4. Push the cable lock nut into outlet box.



Reverie Large Three-Tier Chandelier

Item # KW 5406

WE RECOMMEND INSTALLATION OF THIS LIGHTING FIXTURE BE DONE BY A LICENSED ELECTRICIAN.

WARNING*SWITCH OFF THE MAIN ELECTRICAL SUPPLY FROM THE MAIN FUSE BOX/CIRCUIT BREAKER BEFORE INSTALLATION.**

INSPECT ITEM CAREFULLY BEFORE ATTEMPTING TO INSTALL. IF THERE IS ANY DAMAGE OR OBVIOUS DEFECT. DO NOT INSTALL.

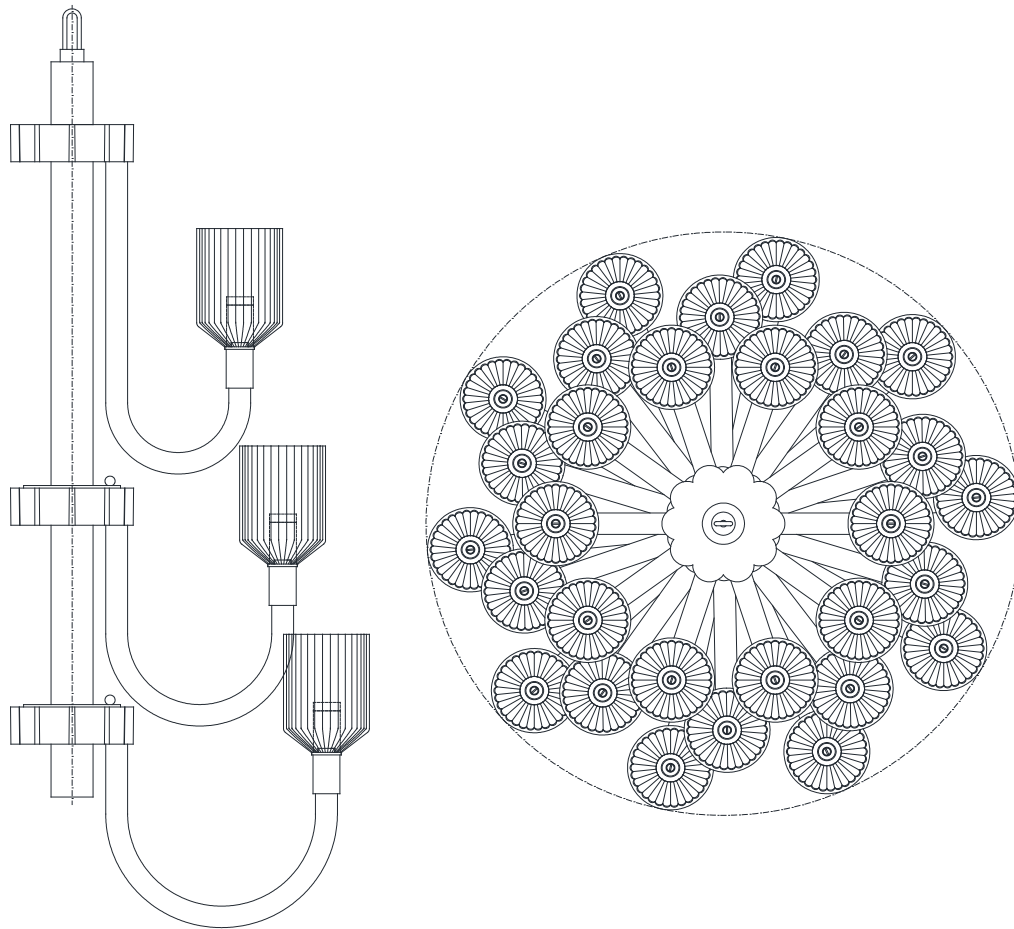
ITEM MAY NOT BE RETURNED ONCE IT HAS BEEN INSTALLED.

NOTE: CAREFULLY UNPACK EACH PIECE IN TOP LAYER OF PACKING PRIOR TO REMOVING. RETAIN ALL PACKING MATERIAL UNTIL INSPECTION AND INSTALLATION ARE FINAL.

31. Strip the insulation back on the two power supply wires about 5/8".
 32. Twist the power supply and ground wire together and push through the center hole of the ceiling loop (C).
 33. Raise the middle component fixture body. Let the safety cable from the tube (M) connect the cable lock nut (A6).
 34. Connect the jump neutral wire (Z1 & Z2)(white) and main neutral wire (ribbed, no markings) together using wire nut (K).
 35. Connect the jump hot wire (Z1 & Z2)(black) and main hot wire (smooth edge, markings) together using wire nut (K).
 36. Attach the gap (T) to the tube (M), rotate the middle component fixture body and secure the nut (A4), then attach the small panel (A5) to the holes on the tube (M).
 37. Raise the bottom component fixture body. Let the safety cable from the tube (V) connect the cable lock nut (A6).
 38. Connect the jump neutral wire (Z3 & Z4)(white) together using wire nut (K).
 39. Connect the jump hot wire (Z3 & Z4)(black) together using wire nut (K).
 40. Attach the gap (W) to the tube (V), rotate the bottom component fixture body and secure the nut (A4), then attach the small panel (A5) to the holes on the tube (V).
 41. Loosen the lock collar (E), slip down the canopy (D) carefully.
 42. Connect the fixture Ground (bare) wire with the ground wire from the outlet box using wire nut (A). If your house does not have ground wire, then attach this wire to the green grounding screw inside of the outlet box.
- IT IS IMPERATIVE THAT THIS FIXTURE BE GROUNDED.



ASSEMBLY INSTRUCTIONS



Reverie Large Three-Tier Chandelier

Item # KW 5406

WE RECOMMEND INSTALLATION OF THIS LIGHTING FIXTURE BE DONE BY A LICENSED ELECTRICIAN.

WARNING*SWITCH OFF THE MAIN ELECTRICAL SUPPLY FROM THE MAIN FUSE BOX/CIRCUIT BREAKER BEFORE INSTALLATION.**

INSPECT ITEM CAREFULLY BEFORE ATTEMPTING TO INSTALL. IF THERE IS ANY DAMAGE OR OBVIOUS DEFECT. DO NOT INSTALL.

ITEM MAY NOT BE RETURNED ONCE IT HAS BEEN INSTALLED.

NOTE: CAREFULLY UNPACK EACH PIECE IN TOP LAYER OF PACKING PRIOR TO REMOVING. RETAIN ALL PACKING MATERIAL UNTIL INSPECTION AND INSTALLATION ARE FINAL.

43. Connect the fixture main Neutral (ribbed, no markings) wire with the neutral wire from the outlet box using wire nut (A).

44. Connect the fixture main Hot (smooth edge, markings) wire with the hot wire from the outlet box using wire nut (A).

DO NOT REVERSE THE HOT AND NEUTRAL CONNECTIONS OR SAFETY WILL BE COMPROMISED.

45. Tuck these wire connections neatly into the outlet box to secure.

46. Put canopy (D) to ceiling loop (C), and secure with lock collar (E).

47. Attach the glass shade (R) to the arms and secure with socket ring (Q).

48. Insert bulbs (not included) into the sockets.

49. Installation is complete, turn on power at fuse or circuit breaker.

***Clean with a dry, soft cloth only. Use no harsh abrasives or chemical agents.

