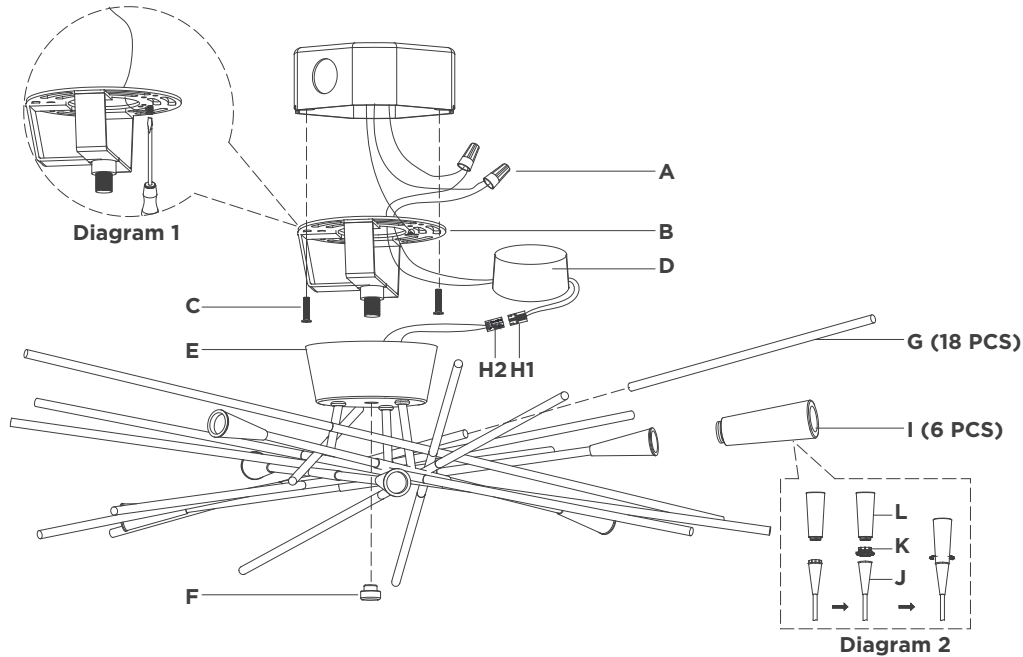


ASSEMBLY INSTRUCTIONS



Stellar Flush Mount

Item # CHC4620

WE RECOMMEND INSTALLATION OF THIS LIGHTING FIXTURE BE DONE BY A LICENSED ELECTRICIAN.

WARNING*SWITCH OFF THE MAIN ELECTRICAL SUPPLY FROM THE MAIN FUSE BOX/CIRCUIT BREAKER BEFORE INSTALLATION.**

INSPECT ITEM CAREFULLY BEFORE ATTEMPTING TO INSTALL.

IF THERE IS ANY DAMAGE OR OBVIOUS DEFECT. DO NOT INSTALL.

ITEM MAY NOT BE RETURNED ONCE IT HAS BEEN INSTALLED.

NOTE: CAREFULLY UNPACK EACH PIECE IN TOP LAYER OF PACKING PRIOR TO REMOVING. RETAIN ALL PACKING MATERIAL UNTIL INSPECTION AND INSTALLATION ARE FINAL.

1. Carefully remove all parts from the box. Place on a clean, soft surface.
2. Remove mounting plate (B) from fixture (E) by removing threaded cap (F).
3. Install mounting plate (B) to the junction box and secure with mounting screws (C).
4. Connect supply ground wire (usually green or bare copper) around the green grounding screw (See diagram 1). Tighten.
NOTE: It is imperative that the fixture is grounded.
5. Connect driver (D) input neutral wire (white) to the supply neutral wire (usually white) using wire nut (A).
6. Connect driver (D) input hot wire (black) to the supply hot wire (usually black) using wire nut (A).
CAUTION: Do not reverse the hot and neutral connections.
7. Make sure all wire connections are tight, then carefully tuck into the junction box.
8. Insert driver (D) into the mounting plate bracket.
9. Connect quick connectors (H1) & (H2) together.
10. Install fixture (E) to mounting plate (B) and secure with threaded cap (F).
11. Thread metal bars (G) to fixture body (E).
12. Remove protective caps (K) from socket (J), then thread diffusers (I) to sockets (J) (See diagram 2).
NOTE: Discard protective caps (K) after assembly.
13. Installation is complete.

* * * Clean with a dry, soft cloth only. Do not use harsh abrasives or chemical agents.

VISUAL COMFORT & Co.

